

C920 SCREEN-STENCIL PRINTER



Aurel C920 is a high precision free stand screen/stencil printing machine with cabinet and security cover that can print area up to 350 x 400 mm, assuring uniform deposition from corner to corner. This machine can be equipped with a ProAlign Vision system for the perfect alignment between the substrate and the screen. C920 is really versatile thanks to the possibility to easily exchange different fixtures according to the substrate size and type (acrylic or aluminium with nest, microporous stone, drilled mutli-holes chuck, etc).

APPLICATIONS

AUREL C920 is a free standing screen-stencil printer with cabinet and security cover that can print area up to 350 x 400 mm, assuring uniform deposition from corner to corner.

Some applications for electronic and general industrial purposes are:

- Thick film pastes
- Solder paste for SMT
- Glue, adhesive, resin
- Polimeryc pastes
- Solder resist
- Flexible Foils
- Membrane switch panel
- Solar cell
- LTCC and Via Filling
- Through holes metallization



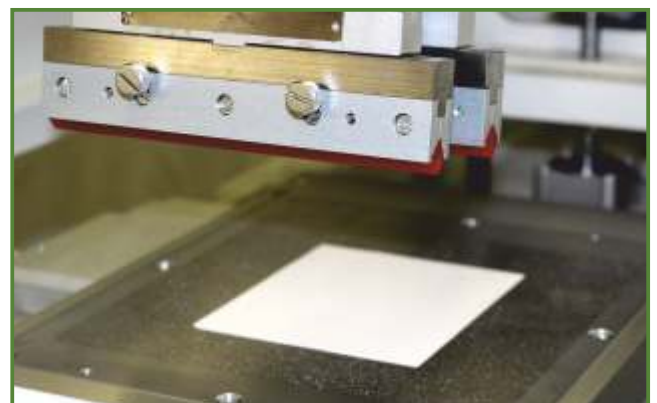
USER-FRIENDLY INTERFACE WITH TOUCH SCREEN MONITOR

CONTROLS

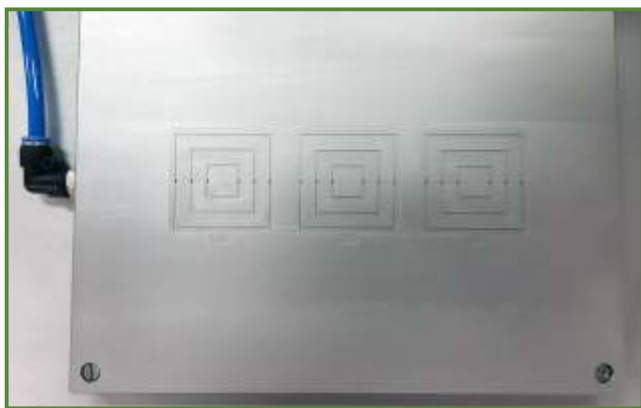
- The machine is PC controlled and allows a great deal of flexibility on all functions
- Windows © Operating System
- Wide touch screen monitor with user friendly interface
- Print and flood, alternating print and after print delay
- Programmable printing speed and pressure
- Machine diagnostic
- Work recipes storing and data logging
- Machine hood & parts lifting and locking safety switches



- Chuck for printing on cylindrical parts



**- Porous table for flexible substrates & green tape
- Double squeegee head**



- Custom work tables

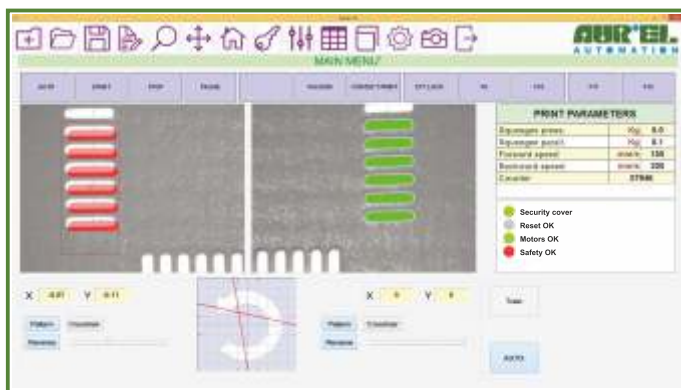


- Paste reload dispenser

CHARACTERISTICS

- Double squeegee head
- Speed & Pressure digital control
- Automatic shuttle table
- Large printing area (up to 350x 400 mm)
- Print & Flood, Print & Print, Print + Print
- Contact and off contact
- Printing head dc motor drive
- Programmable adjustment of the printing speed & stroke
- Precision X-Y-Theta work table for accurate substrate alignment
- Substrate hold-down by vacuum
- Vacuum by Venturi ejector
- All movements on precision ball bearing linear slides
- High precision print head with micrometric height and down stop adjustment
- Print gap measurement set

PRO ALIGN VISION SYSTEM



VISION SYSTEM

- Pro Align Vision system
- Two TV cameras (resolution 640 x 430 pixels)
- Graphic overlapping of the memorized fiducials on the "life" image
- Accurate alignment by manual micrometers
- Programmable tolerance to achieve very high precision (for fine line and fine pitch)

OTHER OPTIONS

- Screen adapters
- Special fixtures and chucks (easily interchangeable)
- Screen service
- Paste reload dispenser
- Pneumatic screen locking
- Chuck for printing on cylindrical parts

SPECIFICATIONS C920

PRINT PARAMETERS

| | |
|------------------------------|----------------|
| Max print area | 350 x 400 mm |
| Max substrate size | 450 x 450 mm |
| Max squeegee width | 400 mm |
| Max screen size | 540 x 540 mm |
| X-Y adjustment | ± 25 mm |
| Z adjustment (screen height) | ± 10 mm |
| Theta adjustment (rotation) | ± 3° |
| Print stroke | 50 - 400 mm |
| Squeegee speed | 0 - 300 mm/sec |
| Squeegee pressure | 0 ÷ 12 Kg |

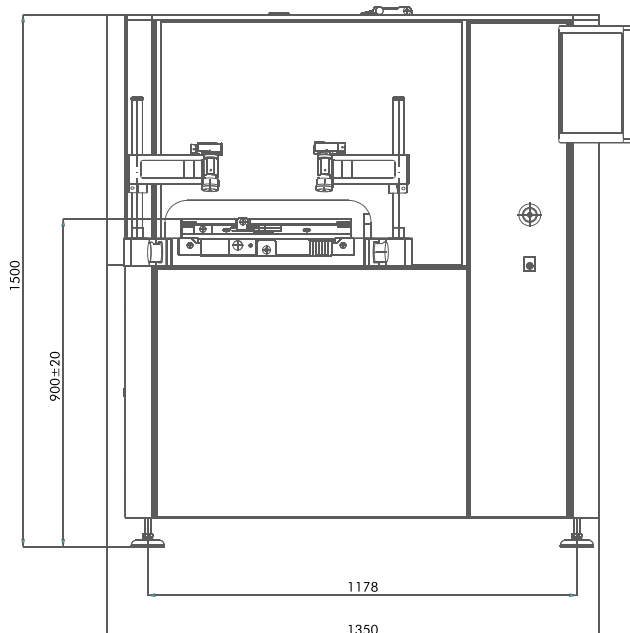
MACHINE CAPABILITY

| | |
|------------------------------|--------------------|
| Carriage repeatability | ± 0.15 mm |
| Carriage resolution | ± 0.0005 mm |
| Squeegee and screen parallel | ± 0.02 mm / 100 mm |
| TV Camera resolution | 0.001 mm |
| Vision system repeatability | ± 0.001 mm |
| Total system repeatability | ± 0.012 mm |

DIMENSIONS & INSTALLATION REQUIREMENTS

| | |
|-----------------------|--------------------------|
| Dimensions | 1100W x 1350L x 1500H mm |
| Approx. weight | 400 Kg |
| Compressed air supply | 5 Ate 25 NI/min MIN |
| Power supply | 230 V - 50Hz - 4A |

FRONT VIEW



SIDE VIEW

